

WHAT'S NEW IN JMP® 11



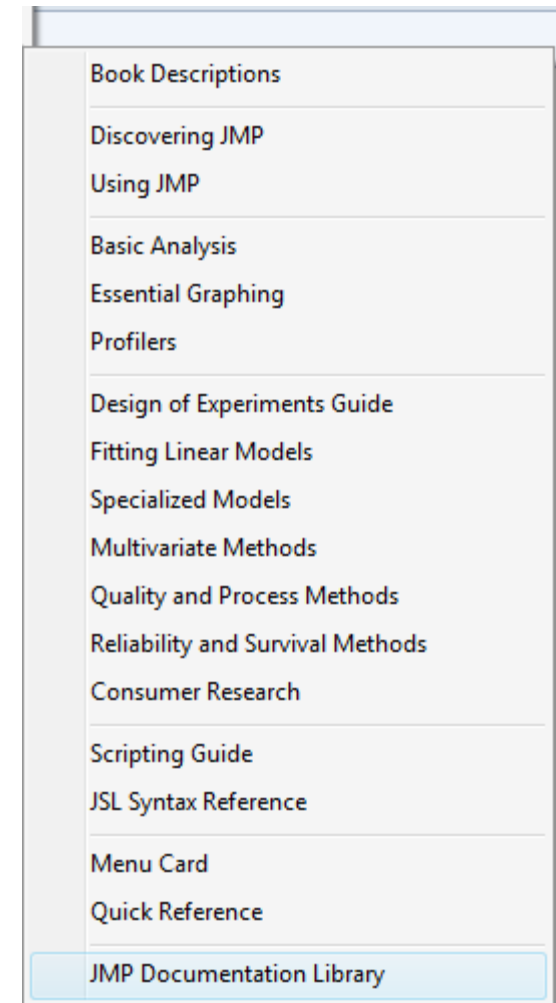
CUSTOMER LOYALTY TEAM • Support You Can Count On

HIGHLIGHTS WHAT'S NEW IN JMP 11

- Excel Import wizard
- Preference Enhancements
- Graph Builder
- Transform Variables
- Methods for Messy and Missing data
- Export Interactive Reports
- Randomly sample large import data sets
- Design of Experiments (DOE)
- Quality Engineering, Reliability & Six Sigma

[Working with Data: Making Hard Things Easy - John Sall Video](#)

[What's New in JMP 11](#)



A screenshot of the JMP Documentation Library menu. The menu is a vertical list of items, each on a separate line, with horizontal lines separating the sections. The items are: Book Descriptions, Discovering JMP, Using JMP, Basic Analysis, Essential Graphing, Profilers, Design of Experiments Guide, Fitting Linear Models, Specialized Models, Multivariate Methods, Quality and Process Methods, Reliability and Survival Methods, Consumer Research, Scripting Guide, JSL Syntax Reference, Menu Card, Quick Reference, and JMP Documentation Library. The last item, 'JMP Documentation Library', is highlighted with a light blue background.

Book Descriptions
Discovering JMP
Using JMP
Basic Analysis
Essential Graphing
Profilers
Design of Experiments Guide
Fitting Linear Models
Specialized Models
Multivariate Methods
Quality and Process Methods
Reliability and Survival Methods
Consumer Research
Scripting Guide
JSL Syntax Reference
Menu Card
Quick Reference
JMP Documentation Library

WHAT'S NEW IN JMP 11

GENERAL ENHANCEMENTS

- Documentation simplified and reorganized
- Statistical effects that are color-coded by their significance level.
- More informative labels and hover-help, with support for pinning multiple labels to a graph.
- "Anti-collision" smart labels, which increase readability and emphasize outliers in graphs.
- A Columns Viewer finds important columns and generates summary statistics.
- Tabulate is now a platform in the Analyze menu. Improvements include removal of the popup option for role selection.
- New labels and automatic label placement options make interesting data points easier to locate and identify.
- Expanded column filtering options search by type, name and other shared attributes.

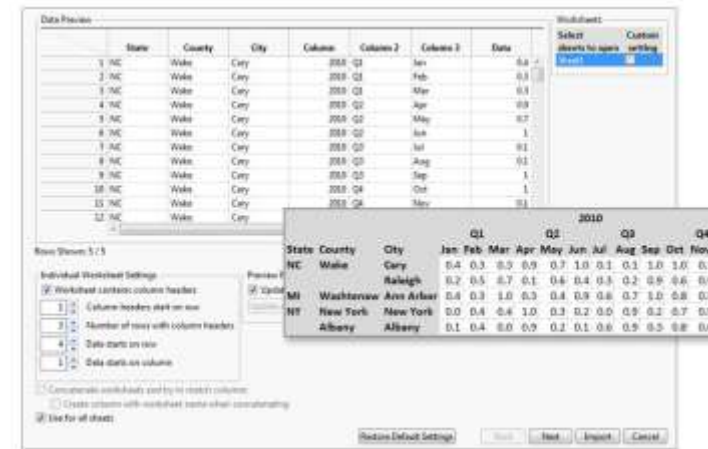
[How to Add Labels to Bar and Pie Charts in Graph Builder - YouTube Video](#)

WHAT'S NEW IN JMP 11

EXCEL IMPORT WIZARD

- Provides more options for data location during import.
- Aids verification of import settings by presenting a visual preview.
- Concatenates multiple worksheets and tries to match columns to ease data cleansing and joining tasks post-import.
- Provides stack capability to arrange data in a way that works better in JMP.
- Allows you to fill in values for Excel "merge" cells.
- Automatically generates JSL to refresh data from the Excel workbook if the file changes or is updated.

[Using Excel Wizard to Import Data in JMP 11 for Windows - YouTube Video](#)



WHAT'S NEW IN JMP 11

PREFERENCE ENHANCEMENTS

- Updated Graphs Preference Group
- New Styles Preference Group
- New options for customizing color themes.

The screenshot shows the JMP 11 Preferences dialog box with the 'Styles' preference group selected. The 'Styles' group is highlighted in blue in the left-hand navigation pane. The main area of the dialog is divided into several sections:

- Color Presets:** A row of six color swatches (white, light blue, medium blue, dark blue, purple, and light purple).
- Colors:** A section with five color pickers: Frame Color (dark grey), Major Grid Line Color (light grey), Minor Grid Line Color (very light grey), Graph Background Color (white), and Window Background Color (white). An 'Original' button is next to the Minor Grid Line Color picker.
- Tick Marks and Grid Lines:** A section with four checkboxes: Frame Border, Tick marks inside graph frame, Major Grid Lines, and Minor Grid Lines.
- Report Tables:** A section with six checkboxes: Underline Table Headings, Shade Table Headings, Table Column Borders, Table Row Borders, Shade Alternate Table Rows, and Shade Table Cells.

On the right side of the dialog, there are two preview windows:

- Preview Graph:** A scatter plot showing 'height' on the y-axis (ranging from 60 to 180) and 'weight' on the x-axis (ranging from 50 to 75). The data points are black dots, and a red regression line is drawn through them.
- Preview Report Table:** A table showing the regression equation and parameter estimates.

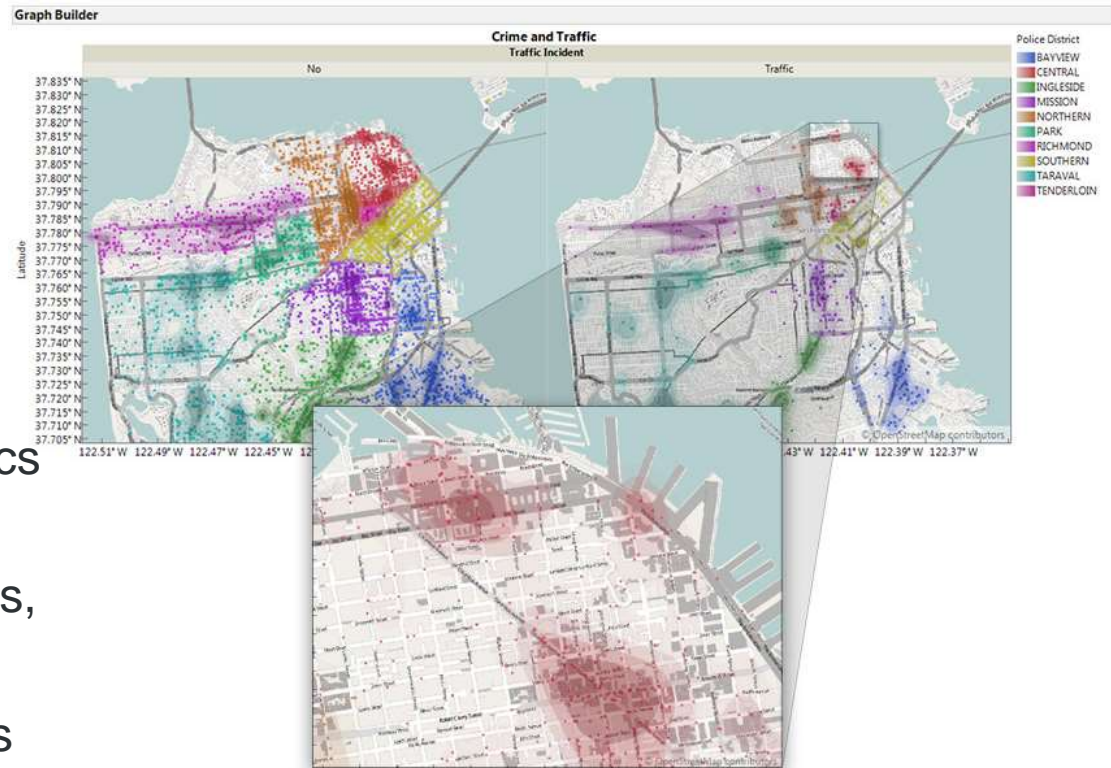
The regression equation is: $\text{weight} = -127.1452 + 3.7113549 \times \text{height}$

Term	Estimate	Std Error	t Ratio	Prob> t
Intercept	-127.145	37.52372	-3.39	0.0016*
height	3.711355	0.598559	6.20	<.0001*

At the bottom of the dialog, there are five buttons: OK, Cancel, Apply, Reset to Defaults, and Help.

WHAT'S NEW IN JMP 11 GRAPH BUILDER

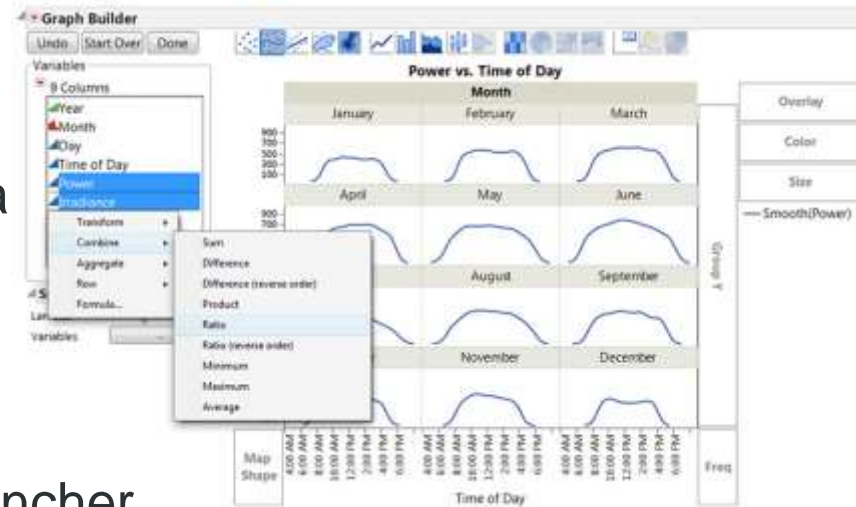
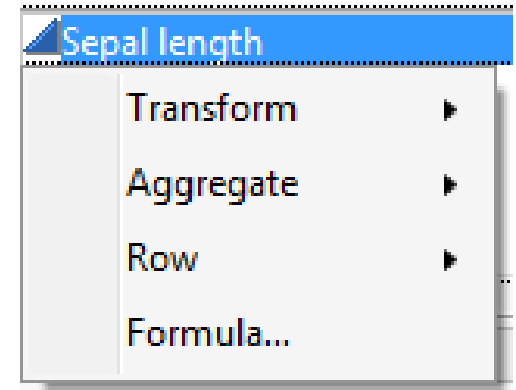
- Graph Builder offers a multitude of improvements
 - the ability to create geospatial scatterplots
 - to page through group variables
 - add more summary statistics to graphs.
- Plot data on street level maps, with access to geographic features such as cities, roads or bodies of water.



WHAT'S NEW IN JMP 11

TRANSFORM VARIABLES

- Make it easier to stay in the analysis flow, while looking at data from different perspectives.
- Are temporary, formula-based columns that can be created on the fly without having to save them to the data table.
- Include a suite of functions to transform, combine or for complete flexibility apply a function to any of the variables.
- Also can transform dates, aggregating or recoding dates with ease.
- Are accessed by right-clicking on any launcher dialog.
- May be stored to the data table, if you want to create a permanent column.



- Additional robust fitting options in Distribution, Bivariate and Oneway platforms.
- Fit Response Screening, a new personality in Fit Model, which lets you perform multifactor response screening, specify model structure and add interaction and polynomial terms to your models.
- Use the False Discovery Rate (FDR) report in the Response Screening platform to determine which effects are truly significant and which are just due to random variation. (FDR is a general way of doing multiple comparisons correction and helps to dramatically reduce false positives.)
- Option to create missing values as informative categories in the Partition platform

WHAT'S NEW IN JMP 11

EXPORT INTERACTIVE REPORTS

- Interactive HTML provides a subset of features from JMP:
 - Explore interactive graph features.
 - View data by brushing.
 - Show or hide report sections.

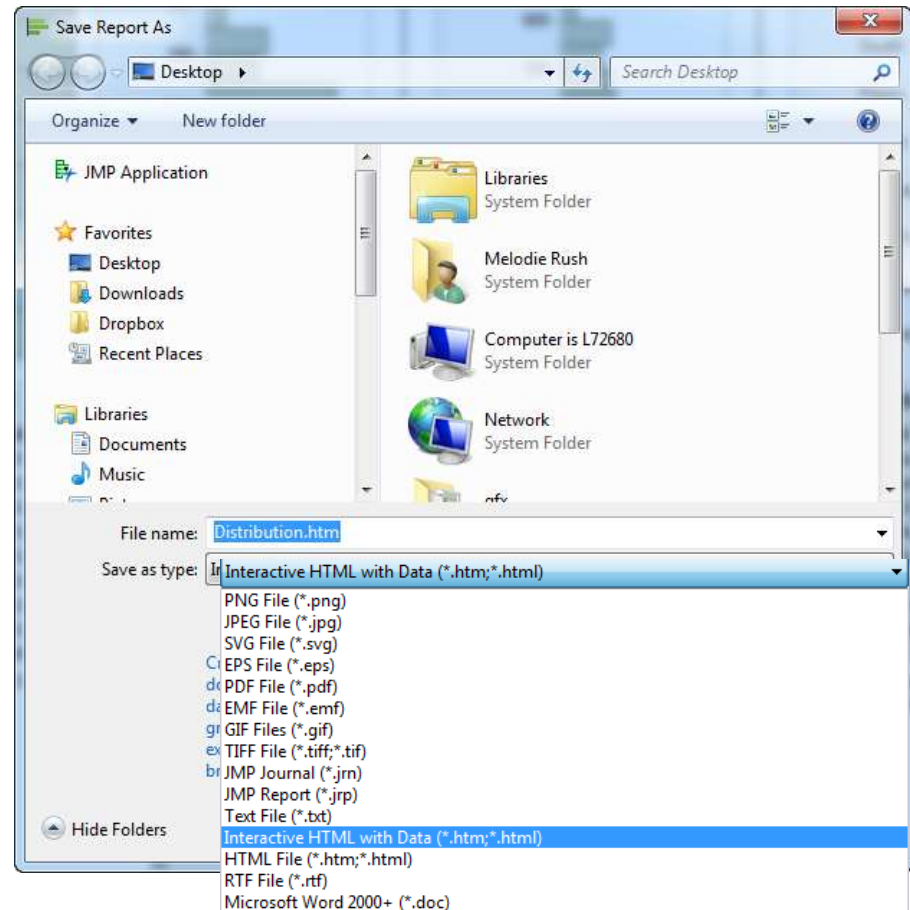
File → Save As

[Distribution Example - Local](#)

[Fit Model Example - Local](#)

[Distribution Example](#)

[Fit Model Example](#)



WHAT'S NEW IN JMP 11 IMPORT SAMPLING FOR SAS® DATA SETS AND TEXT FILES

- SAS® integration and text import tools in JMP provide new sampling options.
- Often a SAS data set is too large to open up entirely in memory and on your desktop machine.
- Or, for exploratory data analysis, it may be advisable to sample a subset of the data set for more efficient modeling, visualization and analysis.
- You have complete flexibility in how you take the sample.
- Similar sampling provisions also exist for text files that would be otherwise too large to fit in memory.

The screenshot displays the 'Select Data' dialog box in JMP 11. The 'Import Options' section is active, showing 'Auto-sample' selected with a size of 5 MB. Below it, the 'Filter' section contains the SQL query: `SELECT CustID,ItemNo,OrderDate,OrderYear,DaysOut,Rating,LengthMins,Class,Genre`. A 'WHERE' dialog box is overlaid on top, showing the 'SAS SQL' section with the filter `Class = Modern` entered. The 'Data Preview' section at the bottom shows a table with 10 rows and 14 columns, including columns for CustID, ItemNo, OrderDate, OrderYear, DaysOut, Rating, LengthMins, Class, Genre, and Gender.

CustID	ItemNo	OrderDate	OrderYear	DaysOut	Rating	LengthMins	Class	Genre	Gender
5013	1064	01/01/2006	2006	11	PG	99	Modern Family	F	
5028	1038	01/01/2006	2006	13	PG	128	Classics Musical	M	
5029	1085	01/01/2006	2006	7	PG	102	Modern RomCom	F	
5036	1102	01/01/2006	2006	4	PG13	92	Modern Western	M	
5049	1077	01/01/2006	2006	10	R	124	Modern Romance	M	
5086	1091	01/01/2006	2006	13	PG13	140	Modern Thriller	M	
5092	1050	01/01/2006	2006	4	PG	93	Modern Comedy	F	
5099	1066	01/01/2006	2006	4	R	95	Modern Horror	M	
5133	1069	01/01/2006	2006	15	R	108	Modern Horror	M	
5135	1064	01/01/2006	2006	7	PG	99	Modern Family	M	

- Definitive Screening Design platform identifies crucial factors affecting a response.
- Flexible orthogonal and near orthogonal array generation supports factors at mixed levels and arbitrary numbers of runs.
- Cluster-based space-filling designs allow for inequality constraints on factors.
- Space-filling mixture designs are now supported.
- Many DOE platforms are now scriptable.
- Revamped and enhanced power analysis section of the design evaluation output in most DOE platforms.

[New Design of Experiments \(DOE\) Features in JMP 11 - YouTube Video](#)

WHAT'S NEW IN JMP 11

DESIGN OF EXPERIMENTS (DOE)

• Definitive Screening Designs

- Now you can design experiments to separate the vital few factors that have a substantial effect on a response from the trivial many that have negligible effects. If a factor's effect is strongly curved, a traditional screening design may miss this effect and screen out the factor. And if there are two-factor interactions, standard screening designs with a similar number of runs will require follow-up experimentation to resolve the ambiguity. Wouldn't it be nice if you could avoid both of these problems at once? With definitive screening designs, you can

Definitive Screening Design

Responses

Add Response... Remove Number of Responses...

Response Name	Goal	Lower Limit	Upper Limit	Importance
Fitness	Maximize			

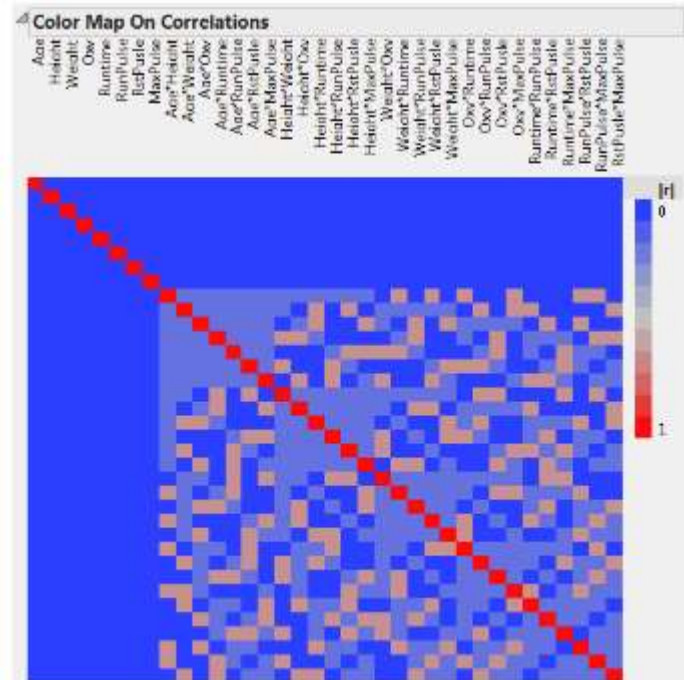
Factors

Continuous Categorical Remove Add N Factors 8

Name	Role	Values
Age	Continuous	40 60
Height	Continuous	61 72
Weight	Continuous	132 200
Oxy	Continuous	37 60
Runtime	Continuous	8 14
RunPulse	Continuous	146 186
RstPulse	Continuous	40 70
MaxPulse	Continuous	155 192

Specify Factors
Add a Continuous or Categorical factor by clicking its button. Double click on a factor name or level to edit it.

Continue



WHAT'S NEW IN JMP 11 | QUALITY ENGINEERING, RELIABILITY AND SIX SIGMA

- Attribute Charts (np-, p-, c-, and u-chart) are supported within the Control Chart Builder.
- Event Chooser in Control Chart Builder for real-time exploration of attribute charts.
- Rare-event g- and t-charts are supported within the Control Chart Builder.
- Work with data sets with one-sided specification limits in the Capability platform.
- Support for Wheeler's range-based measurement in Measurement Systems Analysis platform. Nested and crossed model types available for EMP MSA method.
- Ability to change the process sigma value in the Shift Detection Profiler in the Measurement Systems Analysis platform.
- Bayesian estimation of life distribution fits now supports Quantile and Parameter priors as well as Failure Probability priors in addition to the current Location and Scale priors.

RESOURCES

Training

- Getting Started with JMP – [Free Weekly WebEx](#)
- Mastering JMP Web Series – [Run periodically](#)
- On Demand Webcast – [Online](#)
- Seminars – [Free on location](#)
- Public Education – [Course Listing](#)

Online

- Blog - [Very popular](#)
- JMP User Community - [Files, Scripts & Add-ins](#)
- JMP Learning Library - [Step by Step Instructions](#)



QUESTIONS?

Thank you for your time and attention!



CUSTOMER LOYALTY TEAM • Support You Can Count On